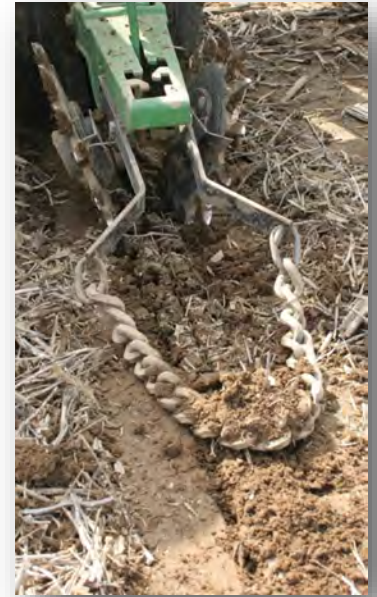


# Options for Closing Wheels

## DCK01 Drag Chain Kit

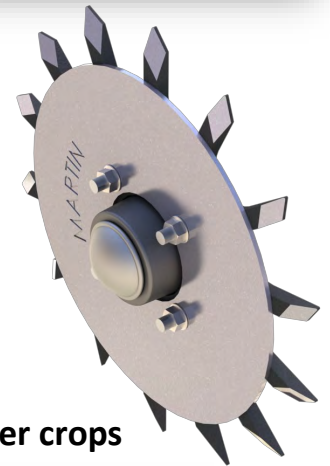
- Heavy square edge cross chain and brackets
- Bolts to all Max-Emerge units
- Fits Kinze and White units with bolt-on wheels
- Kinze 2000,JD 7000 will need holes drilled for mounting

Following behind the Closing Wheels, our Twisted Drag Chain helps to further crumble and level the soil. This helps to even out the rate of drying and ensures the soil does not dry past seed depth. This is a low cost, low maintenance way to help increase uniform emergence in the drier parts of the field and is a must when using the spading closing wheels in minimum till. By the way, some of our customers still feel the need for some shallow tillage in the spring and the spading closing wheels and drag chain combination do an excellent job in that situation.



## Depth Blade (Filler Plate)

- Proven to eliminate wrapping when planting in green or standing cover crops
- Used on both Row Cleaner and Closing systems
- Provides Depth Control and Crimping Action
- 10.5" for 12.5" Razor or 13" Spike
- 12" for 15" Spike wheel



**Works well in cover crops**

